

What is Presbyopia?

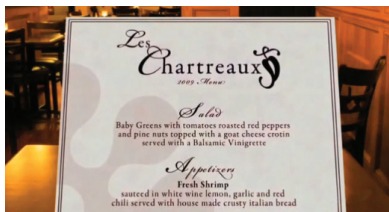
Do you have difficulty reading fine print, have eyestrain when reading, or does your vision blur when transitioning between near and far distances? If so, you could have a condition called presbyopia.

Presbyopia is the normal, age-related loss of the ability to focus on near objects. Eventually it affects everyone, usually starting in your forties, including those who are nearsighted, farsighted, or had perfect vision most of their lives.

Now there is a solution that could improve your age-related near vision. The Presbia Flexivue Microlens™ is a fast, safe, and painless procedure that will turn back the clock on your aging vision.



Without the Presbia Flexivue Microlens™



With the Presbia Flexivue Microlens™



Don't Like Wearing Reading Glasses?

The Presbia Flexivue Microlens™ may be the solution for you!



Presbia Coöperatief U.A.
Pieter Pauwstraat 2A-I
1017 ZJ Amsterdam • The Netherlands
Phone: +31-20-7084-556 • Fax: +31-20-7084-556
www.presbia.com

Presbia Coöperatief U.A. is ISO 13485:2012 Certified

Not Available for Sale in the United States.

The Presbia Flexivue Microlens™

The Presbia Flexivue Microlens™ is a tiny lens, only 3 mm in diameter and about 15 microns thick (one-fourth the thickness of a single human hair), that is placed in the cornea of your eye for the correction of presbyopia.

The Procedure

The Presbia Flexivue Microlens™ surgery is usually performed as an outpatient procedure and requires only topical anesthesia.

A pocket is created in the cornea of your eye using a femtosecond laser

1

The Presbia Flexivue Microlens™ is inserted into the pocket

2

The pocket seals itself, holding the lens in place at the center of the visual axis

3

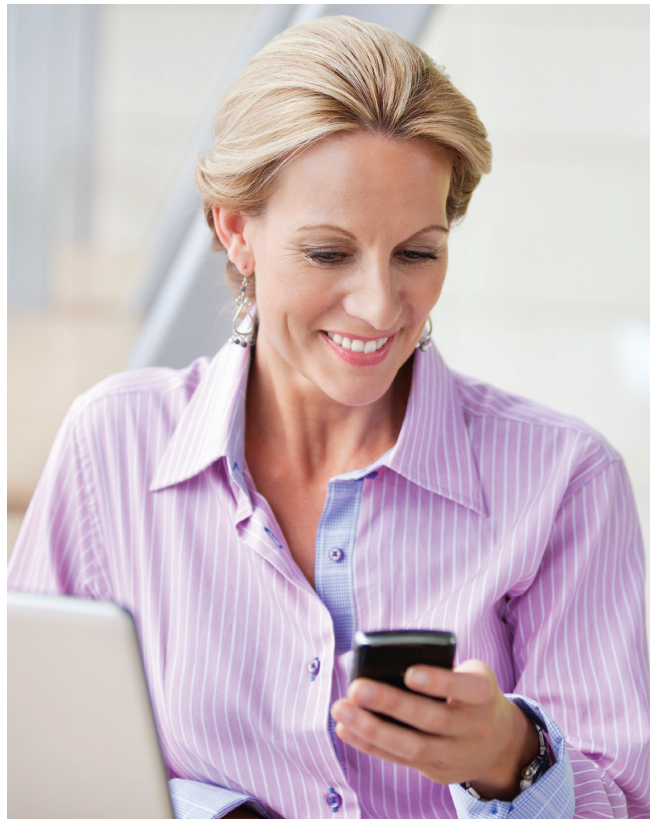
In typically less than ten minutes, your near vision capability can be improved to the point of reduced dependence or no dependence on reading glasses in the future. The Presbia Flexivue Microlens™ can be easily and safely removed if your presbyopia advances and a stronger prescription is required.

What to Expect after the Procedure

Patients go home soon after the procedure to relax for the rest of the day. Most patients report improvement in their vision almost immediately and most resume their normal activities within a day or two. Unlike other procedures for presbyopia, no additional surgery is required on the second eye. Your vision should continue to improve as you adapt to the new lens.

Don't let presbyopia interrupt your active lifestyle, know that the Presbia Flexivue Microlens™ is the best corneal inlay to meet your needs, providing safety, performance and satisfaction.

“After the surgery, I threw all my reading glasses away and I can see extremely well, even very small characters.”
—Rossella Vezzosi, Presbia Flexivue Microlens™ Patient



Presbia Flexivue Microlens™

- Provides a full range of clear vision at multiple distances: far, intermediate, and near
- Allows you to perform most every day duties with reduced or no dependence on glasses
- Provides binocular vision
- Typically performed in the non-dominant eye

For more information or to find a surgeon in your area visit www.presbia.com.